

OutBack Power System Mounting Plate Installation

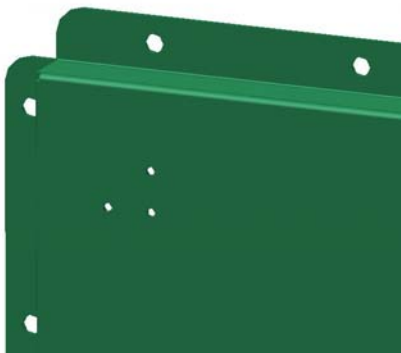
Parts included: 23ea 6mm x 10mm Taptite (self threading) screws
4ea star washers
1ea #3 Phillips screwdriver tip
1ea left panel
1ea right panel

ASSEMBLY : Screw the two mounting plates together using 3 screws with a star washer under one of the screw heads. All of the extruded funnel holes in the mounting plates are designed for 6mm Taptite screws. Threading each hole first will make assembly easier. Use the included #3 bit to drive these screws. Do not use a #2 bit to drive these screws, it just won't work! A #2 screwdriver can be used to bolt everything together **after** the holes have been tapped. The 20 extra Taptite screws are to mount AC and DC boxes to the panel



INSTALLATION:

The next picture gives you a reference as to which end is up. The corner shown will be the upper left corner of the assembly.

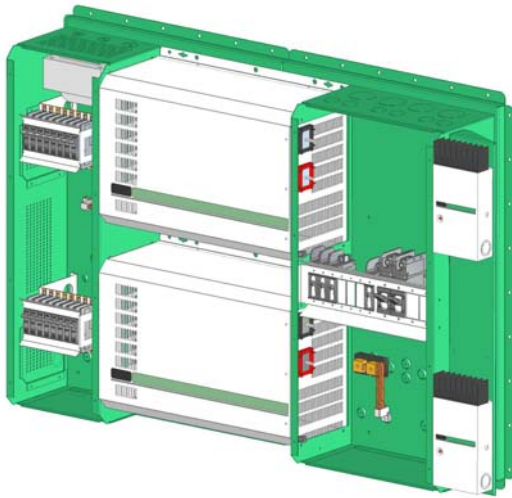


Mount the panel to the wall using at least 6ea #10 screws (not supplied). If the mounting hole pattern doesn't fall on the studs you can drill the panel or use a sheet of plywood on the wall. The inverters and panel can weigh up to 400 pounds so secure the panel well.

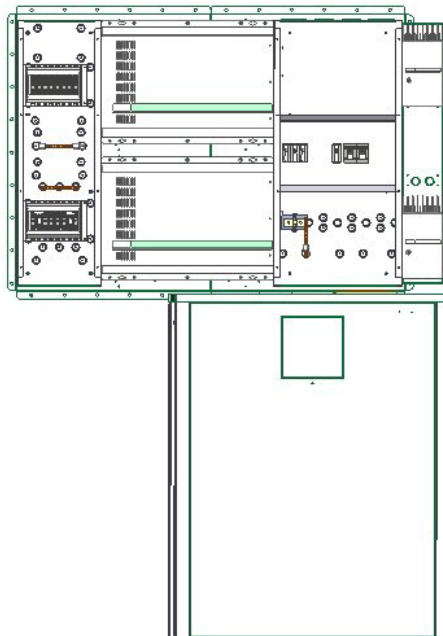
To fit an OutBack battery rack below the panel draw a level line 42 1/2" (1079 mm) off the floor. Place the bottom of the panel on the line. This allows the use of a 3 inch long

nipple to connect the DC breaker box to the battery rack. The pictures below show how the battery box aligns with the panel. Note how the DC breaker box can mount on either side of the power panel, depending on which inverter is to be used.

SW style inverters



Fully loaded Mounting Plates with a single OutBack Power System Rack underneath



DR style inverters

